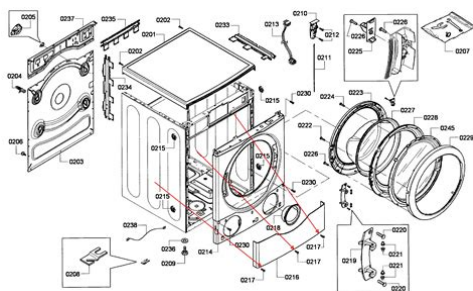


bosch vision 500 washer repair manual



File Name: bosch vision 500 washer repair manual.pdf

Size: 2906 KB

Type: PDF, ePub, eBook

Category: Book

Uploaded: 17 May 2019, 20:16 PM

Rating: 4.6/5 from 688 votes.

Status: AVAILABLE

Last checked: 6 Minutes ago!

In order to read or download bosch vision 500 washer repair manual ebook, you need to create a FREE account.

[**Download Now!**](#)

eBook includes PDF, ePub and Kindle version

[Register a free 1 month Trial Account.](#)

[Download as many books as you like \(Personal use\)](#)

[Cancel the membership at any time if not satisfied.](#)

[Join Over 80000 Happy Readers](#)

Book Descriptions:

We have made it easy for you to find a PDF Ebooks without any digging. And by having access to our ebooks online or by storing it on your computer, you have convenient answers with bosch vision 500 washer repair manual . To get started finding bosch vision 500 washer repair manual , you are right to find our website which has a comprehensive collection of manuals listed.

Our library is the biggest of these that have literally hundreds of thousands of different products represented.



Book Descriptions:

bosch vision 500 washer repair manual

Hold times are long. A noisy spin cycle isn't the end of the world. Don't let a broken water inlet valve break your spirit. And don't be afraid of those error codes you don't understand. Your DIY mojo is just being tested, and Repair Clinic is here to help you pass with flying colors washed in cold water, of course. Need help finding your model number. Most Common Problems Is your Bosch washing machine not working. We specialize in troubleshooting Bosch frontload washing machine problems. All the symptoms your washer may be experiencing are listed right here. But what good would it do if we only helped you confirm what you already know. Once you enter your model number in the search field and find the cause, we can sell you the right replacement part and even show you how to install it. Washer won't spin 19 possible causes and potential solutions View solutions Featured Video Video 0204 705,481 1,589 Washer is making loud noise 14 possible causes and potential solutions View solutions Featured Video Video 0219 527,530 1,005 Washer won't agitate 14 possible causes and potential solutions View solutions Featured Video Video 0159 83,863 105 Washer won't drain 8 possible causes and potential solutions View solutions Featured Video Video 0151 499,623 889 Washer vibrating or shaking 13 possible causes and potential solutions View solutions No Video Available Washer fills slowly or will not fill at all 2 possible causes and potential solutions View solutions Featured Video Video 0312 322,449 890 VIEW ALL The Right Parts for the Job We carry more than 4 million parts from over 175 major brands, so chances are, we've got the part you need. Join Repair Clinic's VIP email list for 10% off, plus other discounts and tips. We've got millions of parts, hundreds of brands, and thousands of stepbystep videos— everything you need to find it, fix it and finish the job right. Please use the box above to search for any other information. <http://amon-syotengai.com/userfiles/canon-s1-is-user-manual.xml>

- **bosch vision 500 series washer repair manual, bosch vision 500 washer repair manual, bosch vision 500 washer repair manual, bosch vision 500 washer repair manual.**

If you are having a problem with the service you are having a problem with your satisfaction, please let the Authorized Service Contractor in the product or manual without notification. Do not attempt to page 29 before calling for service. If after working with the door open. If service becomes necessary, contact your washing machine, please refer to repair the appliance yourself. The model number has a. If your account was disabled by Facebook, however, you. E13 indicates that your pump is taking too long to empty the machine and needs cleaned out. Add Tip Ask Question Comment Download Step 1 I Will Start With the E17 Code. One of the most aggravating things about the E17 code is that when it is going off, your machine door locks up and then it will do nothing but beep and flash E17. It also will NOT allow you to open the door to get things out; your clothes are now held HOSTAGE, they could be rotting in the washer for hours, days, WEEKS, even before it dries out enough down below for your machine to stop freaking out! And what if it is leaking. It certainly won't ever dry out then. For years now I have been dealing with the E17 code by tipping the machine back to allow the water to drain out of the sensor mechanism. But now, I am pleased to announce. I will no longer be obligated to tip back 250 lbs of machine full of water to regain control of this situation, and neither will you, if you follow these instructions. My machine does have a small leak, there is a hole in the door seal. In addition, in my research on this indicates that some people are getting the E17 code even when there is no water leaking, and I certainly have suspected this myself. That said, if you have a leak, you should certainly consider fixing it. ALERT!! ALERT!!! BEFORE DOING ANYTHING, UNPLUG YOUR MACHINE!!! Plus, know that doing these things to

your machine may void any warranty you have. My machine is not under warranty, and I am a brave person who feels at liberty to do as I please.<http://e-hematologica.com/users/canon-ring-flash-manual.xml>

Now Then, lets begin. First you must remove the front panel. I already had mine off because I am constantly having to clean out my pump. Grasp both sides of your bottom front panel on the sides, and pull straight down toward the floor. It is held on by plastic clips that slide out when pulled downward. When you get it off, It will look something like this first pic. Add Tip Ask Question Comment Download Step 2 Open the Water Sensor Housing Case and Remove the Sensor Switch. Use a flat screwdriver to pry up the top of the white sensor housing case and pull out your sensor switch. When I did this, the little plastic clips holding it in place broke, but I dont care. I have no intention of having a functioning flood control switch ever. EVER again! In the 3rd pic here, you can see the Styrofoam that is supposed to float up during a flood to push that gray button on the bottom of the almond colored sensor. In the 4th pic you can see the gray button that triggers the infernal E17 error code. Add Tip Ask Question Comment Download Step 3 Disable the E17 Flood Control Switch Yes, yes, you must separate the little grey button from its Styrofoam partner in crime. I initially tried just unplugging the sensor switch, but the E17 code continued onward, undeterred. All you have to do is place the switch somewhere to ensure that the little grey button wont get pushed. Just make sure it is in a place where it wont get wet. It also has to remain plugged in for your machine to function, apparently. That is all there is to it, you are done. Now my machine is happily washing clothes again. and has remained so as I update this NOV 2015. I have not had to deal with the E17 error code ever again since I did this. Yay! Well,..that is until it was time for it to drain. Then I got the E13 code, which we shall deal with NEXT.

Add Tip Ask Question Comment Download Step 4 Clean Out the Pump on Your Bosch Vision 500 Washer On the right bottom of your machine directly inside the circular hole, is the pump.. This machine ought to have a filter in line before the pump, or at least have an easy way to drain the darn machine. Or, better yet, have a valve that you can close off so that you dont even have to drain it before you can service it. With 6 kids at home I am frequently found crouched in front of the washer tediously draining the machine so that the pump can be cleaned out. Note the little lego dude who has escaped the pocket of my 7yo sons jeans. Apparently there were several of them, all having a swimmingly good time in the wash cycle. So, I feel that I am a qualified expert in the field.; I am planning on installing some kind of in line filter with an easy cleanout for my pump eventually; I will make an instructable for that when I do. Then, You Too can have a pimped out Bosch Vision 500. Add Tip Ask Question Comment Download Step 5 First You Must Drain Your Machine First, try to get your machine to pump out any water that it will. This will make draining your pump about a million times easier. Then it laughed its continual beeping laugh at me, and refused to pump,..It was enjoying being full of water.Hooray!! I assure you, however, the problem was NOT gone. yet. But persevere, my friends and you shall be victorious! SO. There is a small black hose with a plug in it down near your pump. So, therefore, I cannot show you a photo of the actual plug. You will have to view this ratty old toothbrush. NOW then. Be prepared with a bucket. Put your drain hose down into the bucket, and pull out your plug. This may take some strength. Wrestle it out, my dearies. If your machine is not on a pedestal, you will find that your bucket has to be tipped far, far, far to the side in order for the hose to go into it and still be able to drain.

Your bucket will barely be able to hold any water, as you will have it leaned down so low. Shallow containers are worse, as they tend to spill when you bail. I Do recommend putting your machine on a pedestal. It may go to your machines head, but your pump draining process will go easier. You will need another bucket nearby in which to dump the bounty of water which will ensue. Plug the hose up each time you dump your bucket, so as to avoid a flood. Fill and dump many, many times. Eventually all the water will be gone and you can move forward in life. I suppose you could use a

shopvac, but I prefer to keep life interesting and do things the hard way. You have my regal permission to take the easy route in this instance, if that is your preference. Add Tip Ask Question Comment Download Step 6 Remove the Pump Cover Remove the PUMP COVER. Do not do so until fully drained, or there will be a tsunami in your laundry area. This cover will unscrew, turn RightyTightly, Lefty Loosey. Have a towel or two or three handy, depending on how well you drained your pump. A shop vac might be handy here as well. Just know that despite all your draining, some water will come out when you open your pump. Add Tip Ask Question Comment Download Step 7 Clean Out Your Pump. Clean out your pump. Today, my pump had a Lego, a Small Stick and a bunch of Gravelly Stuff. I have pulled out rubber bands, hair clips, wads of hair, socks. If you are averse to disgusting stuff, please call a service technician and pay them a bunch of money to clean out your pump. Plus, wait the many days it will take for them to come to your house while your clothes rot in the machine because it is LOCKED up and won't let you have your clothes back. The Bosch Vision 500 will not allow you to take your clothes to the laundry mat. It locks up tight and refuses to open when there is a problem. And, it mocks you with its beeping laughter the whole time.

Add Tip Ask Question Comment Download Step 8 Close Everything Up and Start Washing Clothes Again. Now, put the pump cover back on. Add Tip Ask Question Comment Download Share it with us! I Made It! Recommendations Maple and Epoxy Resin Bedside Shelves As someone mentioned, there are three torx screws at the bottom of the panel that need to come out. Mine had a bunch of coin and an earring along with gritty crud. The water in the pump housing was disgusting. Like water in the bottom of a sump pump. 0 BobK111 The screws on my washer are a Torx head. Otherwise, it was an easy fix. PS my washer is on a pedestal. Thanks again 0 Boschfannot Question We flooded the area predicted, cleaned the filter and let the clothes free. The machine runs BUT it floods as soon as it fills out. We tried reopening and tightening things but alas. Any ideas And btw, great job here, humans against machines. Keep up the good work. 0 Bb13373 Tip I was going to follow instructions, but before I opened the sensor housing, I simply tried soaking up the excess water with paper towels. It worked!! Took 45 seconds and minimal effort. Thank you for posting. Maybe this will help others, too 0 senordaley Question I lubed it with a little silicone but still won't seat. Afraid to use too many metal tools as it might split the plastic tubing. Video on Utube didn't show any difficulty at all, but I am having fits. Help please! 0 MichaelW701 Question I did these steps exactly and still have error. I even bypassed switch with jumper wire thinking switch was bad, still have error. Is there a reset that needs to be done to clear code. Stumped, please help 0 JustinA96 After fixing E13 had some collar stays in there, and all sorts of gunk I had to dry out the bottom for a bit to get the E17 to turn off. Not sure I would recommend removing the switch except as a last resort because the flood switch is a good thing to have. 0 HannoH The humor is great and reflected our struggle as well.

My wife sends you hugs and kisses! 0 bjeanest Only the cover lid came off leaving all the guts inside. There's not much to grab to try to pull the rest of it out, only a circular ridge that seems like it's supposed to snap into the lid. Any ideas about how to get this part out It pulls out easily. Then, simply snap the two pieces back together before you put it back in. 0 Machinist85 I still have the issue when it tries to drain. Is there somewhere else I can check for blockage. Should I disassemble my pump Thanks It was difficult to see, and the pump also seemed to be spinning fine, but then it would malfunction when I ran the machine. Further close inspection revealed the rubber band or string wrapped up in the impeller. 0 ChrisPinator My clothes weren't coming out fully dry, and I was getting a SUDS warning before the E13 error. Some additional thoughts for firsttimers 1 There are catches in each of the 8! small holes that you can see in the second picture. So when my front panel wouldn't just come down, I gently used a flathead screwdriver pushed in between the main and lower panel and rotated in various places to slowly pry the lower panel off. 2 Make sure that you clean all dirt out of the pump cover screw threads, so that it doesn't bind next time. Use a damp thin cloth those blue Shop Rags on a roll work well rotating COUNTERclockwise are a good start. I then

screwed JUST the cover in part way, removed it, and scraped the dirt to loosen it while sucking it up with a vacuum. Repeat until threads are clean. Make a standard box with a central crosspiece; looks like an 8 from the top with 8, 2x10 corner braces leave enough room for a 2x4 leg inside the brace. I glued closed cell foam to the bottom of any wood that will sit on the concrete floor. I wanted to add something real quick though. During my struggle with this machine I discovered a cord you can pull down to release the door lock, its right above the drain from your pictures.

Thought that might help someone out. My husband knows where it is, I think he had to replace it once after it broke on him. Would love if you post a picture! 0 lizfrancom Most of the time I find nothing in the chamber that would be clogging or blocking the pump. Today I have tried all the tricks over and over again but still getting E13. Does this mean it is time to break down and replace them pump. Is there anything else I should try before doing that. More Comments Post Comment Categories Circuits. Amazon calculates a product's star ratings based on a machine learned model instead of a raw data average. The model takes into account factors including the age of a rating, whether the ratings are from verified purchasers, and factors that establish reviewer trustworthiness. See All Buying Options Add to Wish List Disabling it will result in some disabled or missing features. You can still see all customer reviews for the product. If you have strong water pressure when using the WARM cycle water will leak from the dispenser so you have to remove the soap dispenser Dryer does a fairly good job on drying clothes sometimes sheets may get balled up when drying. I believe this is due to the fins in the dryer that are on a angle. Drying Sensor isnt accurate sometimes some of the clothes are still wet when the cycle says the clothes are dry Fussy machine needs service too many times Reviewed in the United States on October 2, 2018 Its quiet and good with water usage. The drain opens and water goes everywhere, flooding the pan underneath which means again door wont open until the water dries out. Ill never buy a Bosch again. Mine is 8 years old now and currently its locked with just an E. not even telling me whats wrong and everyones loads have been locked in. Very upsetting. Please try again later. Mel 2.0 out of 5 stars The drain opens and water goes everywhere, flooding the pan underneath which means again door wont open until the water dries out. Very upsetting.

Please try again later. Please try again later. Mark 1.0 out of 5 stars Sometimes the timer will get all the way to zero without changing cycles. Yes, it has continued to wash clothes for several hours while I was at work and the count down stays at 1 minute left, it never finishes, it never changes cycles. Sometimes it just doesnt spin the clothes, it will get to the spin cycle, and just slowly spin for ever without getting up to full spin speed, again, it never finishes its process. Sometimes the door lock doesnt work, it will not unlock, and just keeps trying to unlock again and again. Sometimes I hit pause and it causes an error, and it starts the drain and spin cycle immediately. No wonder Bosch stopped making washers and dryers. After a disaster of a machine like this, I am sure they have lost all credibility in the product category. From other reviews of the Bosch Vision 500 I have read, it seems I am definitely not alone. Please try again later. Please try again later. Vivian 1.0 out of 5 stars I am very disappointing on Bosch washer that cannot last more than 3 years and I will never purchase Bosch washer again in my life. Please try again later. Please try again later. Dwayne Carle 4.0 out of 5 stars If you have strong water pressure when using the WARM cycle water will leak from the dispenser so you have to remove the soap dispenser Dryer does a fairly good job on drying clothes sometimes sheets may get balled up when drying. I believe this is due to the fins in the dryer that are on a angle. Drying Sensor isnt accurate sometimes some of the clothes are still wet when the cycle says the clothes are dry Please try again later. Please try again later. Alison Toon 2.0 out of 5 stars However, I wish I had bought a different washer and spent more time choosing it. I made a quick buy based on price and immediate availability, when moving into a new home that had no washer or dryer. I come from Europe and am used to, and expect, frontloader washers.

I expect more features, better usability, and much better quality than I have with this washer.

Problems Almost impossible to find, open, clean and replace the seal of in a watertight way the lint trap. You have to pry the frontbottom cover of the washer off with a screwdriver through holes located on the sides, both sides, of the washer, so you first have to pull it out from wherever its installedyou cannot remove the cover from the front only. The screwon top to the trap is at an awkward angle inside the machine. Any grit that has accumulated within the lint trap gets trapped in the threads and makes it almost impossible to replace the top and make it fully watertight. As its a good practice to clean the lint trap regularly, this is REALLY poor design. All other washers that I have used have the trap cover in an easilyaccessible place. Theres no way to program for an extraheavilysoiled wash i.e., no prewash program. Program choices are very limited. THAT DARN PINGING that goes on, and on, and on when the wash is finished. Yes, you can turn it off but as its a matter of pressing certain buttons in a certain order, it resets itself on a regular basis and PING PING PING PING PING darnit I know the wash has finished and Ill empty it in my own good time stop PINGING. Please. And a note for anyone installing any washer and dryer. Make sure to ask the installers to put the washer on the left and the ddryer on the right, otherwise they WILL do it the other way around. And then when you go to wash somthing, youll find the doors open towards each other. Then youll either have to reinstall both the washer and dryer, or keep struggling to move the wet washing over the doors into the dryer. NOTE TO SELF remember this next time! Good points its a frontloader washing machine, it washes clothes well, it has an ecofriendly setting lower temperature, and it does the job. If I were buying again, Id go slightly more upscale.Please try again later. Please try again later.

Jim ORourke 1.0 out of 5 stars When it overheats, this means the door will not open. Our technician has been here half a dozen times trying to fix it. The entire door latch mechanism, and some other surrounding parts, have been replaced, but that doesnt fix the problem. Even before this problem started, it had a bad feature of retaining water in the folds of the front rubber gasket. You have to towel out the excess water every time you finish a wash. If you dont, the machine will soon stink. This is an annoying piece of junk.Please try again later. Please try again later. MM 5.0 out of 5 stars The Bosch Vision is different from other machines Ive owned in the past in terms of cycle selection, temperatures and options so it does pay to familiarize yourself with the manual before use but its not difficult to get up to speed in 15 or 20 minutes of reading. I do agree with one reviewer who said the handwash cycle isnt great for removing stains or deep cleaning. It is a very short cycle designed to keep delicate clothes in top condition and at this it succeeds, just dont expect deep cleaning power. I do generally run most cycles with an extra rinse but this machine cleans with incredibly small amounts of water, even with the additional rinse the total water consumption is very low. Im amazed at how little detergent is necessary to achieve a bright, fresh appearance and feel to all my clothes. The manual warns about using too much detergent and I think other users either do not read the manual or dont understand how little is needed for optimal cleaning. I use Method liquid detergent which says four pumps is for one load. Ive experimented with different amounts of detergent and learned that most small to moderate sized loads of normal soiling get super clean with only one pump of detergent. For more heavily soiled loads with oils, greases, sweat and other contaminants that break down the detergent Ive found two pumps provides better excellent results.

I might use three or four pumps but only for large loads of clothes worn by a deep fry cook or mechanics overalls full of oil residues. And at 4.4 cubic ft. you can do some rally large loads. I washed a load of really absorbent thick white cotton bath towels that completely filled the drum using two pumps of Method detergent and one ounce or regular bleach and they came out smelling fresh, looking bright and super soft and fluffy. Smooth and as close to silent as one could hope for the sound barely changes from small to huge loads and Ive the machines have never shaken or vibrated regardless of load size. I dont understand the problem some have reported with mold. The only precaution Ive taken is to leave the washer door slightly ajar for one day after Ive done laundry then I close it if I want and there has been nothing but fresh, clean smells. I cant say that about my

first frontload laundry pair Maytag Neptune. They molded within the first month or so and the smell never went away even after I had the redesigned seal installed. And the Neptune never got my clothes completely clean. The Bosch manual says too much detergent can cause mold and I think this is the likely culprit for those who have reported a moldy smell from the Bosch. Only use a small amount of detergent, less than you think will work. You will save a lot on detergent costs and have clothes that are cleaner and fresher than ever. This is a difficult concept to come to terms with for people who are accustomed to waterguzzling top loaders. Please try again later. Please try again later. Consumer66061 2.0 out of 5 stars They are probably okay if you are a complete Nimrod, and want the standard settings on the machine to do the thinking for you, but I have been doing laundry many years now, and I know what temperature, cycle, etc. It does however, think that a choice of spin speed is vitally important, because you can change that on every cycle.

I don't really know what temperature these wash in and unless you refer to the graph in the manual, you won't, so I only use them for those things that have been washed 1000 times before. Many cycles seem extra long the Xtra Sanitary cycle is about 3 hours long when you add a stain cycle. And you may think I am kidding on this next thing, but the minutes during the countdown of a wash cycle are sometimes much longer than a minute. One time, a cycle had one minute left for 5 minutes and this is not the same everytime. Seriously. Now, let me be straight, I have found nothing seriously adverse about the way they clean the clothes. That's pretty standard. The drying on the other hand, takes some creativity on which cycle usually cycles to choose to get the stuff dry in the least amount of time. The end cycle signals are the MOST annoying feature. They ring incessantly okay, that's a lie. They do stop after sometime longer than 20 minutes of beeping about every 6 seconds. I haven't let the beep go on much longer than that, because it drives us crazy but if you are trying to sleep or just can't get to the washer right away it will drive your whole household insane until someone rushes in and opens the washer door to stop it. How many times do you have to be reminded that the wash cycle is finished. Once or twice would suffice, right. The dryer also has its own annoying cycle beeps which can be changed if you want to. I am still figuring this out. Rinsing well seems to be a problem, and I only use 12 tablespoons of detergent, as recommended, even if you add the Allergy Rinse. This leads me to vibration mode. On Max Spin our whole house vibrates sounds like a helicopter is hovering overhead. We have now opted to choose a lower spin speed each time we start another load, if we actually remember to do it. We, after wrenching these two monster units into place in our newly remodeled laundry room, erroneously assumed we could switch the washer door opening, as we could on the dryer. Uhuh.

So now we have a washer that opens to the wrong side. Umm, what else Oh, yes. The drying cycles on the dryer of course restart their time ALL OVER AGAIN if you happen to want to open the door to check on how your load is doing, or add another item. For example, if you have chosen a cycle that takes 60 minutes, and it's been running for 40 minutes and you are wondering if your shirt is dry enough yet so you open the door to check on that shirt and no, it's not dry enough so you throw it back in and close the door. The timer then automatically resets back to 60 minutes no kidding. You get to start all over again, or choose another cycle entirely. So, if I had enough money to give these away, and get another brand like my old LGs, I would. If this helps someone else avoid some angst, then it has been worth my time. Please try again later. Please try again later. eMCee2 2.0 out of 5 stars The kicker for me is that we bought our set in March 2010; I started getting E17 errors just under 2 years later. The part was replaced under warranty, but of course the labour was not. While the local service people were good, the Bosch service center response left a lot to be desired. Now, about 14 months later. There are some stupid design things on the companion dryer as well. Doubt I will be buying a Bosch again. Please try again later. Please try again later. If I were asked to imagine a day in my life doing laundry 20 years from now, I would naturally expect this to be the machine I'd be using. Please try again later. Please try again later. You can still see all customer reviews for the product. Reviewed in the United States on July 3, 2019 Yes, it rusts under the drawer. Sand it down

and repaint every 2 years. I've owned this for 9 years. I bought it because I have a septic field and it uses only 9 gallons per wash. With a family of 4 we do about 20 washes a week. No repair took over an hour and all of the parts are easily ordered. The diagnostics are well done.

An inexpensive part and easy to replace, I ordered 2 because shipping cost more than the part. I probably could have made a replacement using hanger wire and a spring. The diagnostics on the unit identified the issue. In the future I'll clean the trap, it was filled with change. Now at Year nine the door hinge broke another simple replacement part. I'd rather have a well built unit designed to be maintained than a throw away that lasts 5 years. I have had it for about 4 years and have had NOTHING but problems. I have called several times only to be told that my issue is isolated and out of warranty. My issue Well the washer smells and I keep get the dreaded E24 code meaning it won't drain. It does drain though. I have replaced the pump 4 times so far because again this is an isolated issue to me and every pump goes bad, how you ask. This has happened 4 times. Bosch should be ashamed that they sold this garbage machine. Just to top it off they have a pending class action lawsuit against them for the above reason stated. You stole my money and have caused a headache for me and my family. Thanks for the garbage machine you made! Please try again later. Phillip Ruer 4.0 out of 5 stars Good electronics and simple design. Sand it down and repaint every 2 years. I'd rather have a well built unit designed to be maintained than a throw away that lasts 5 years. Please try again later. Please try again later. ted 1.0 out of 5 stars My issue Well the washer smells and I keep get the dreaded E24 code meaning it won't drain. Thanks for the garbage machine you made! Please try again later. Please try again later. typeface 5.0 out of 5 stars We bought them used for next to nothing and have never had a problem. We stacked ours to save space and they do a great job. The trick is to move your laundry to the dryer soon after it's done to prevent musty smell. We also always leave the washer door open when not in use. No rust no corrosion.